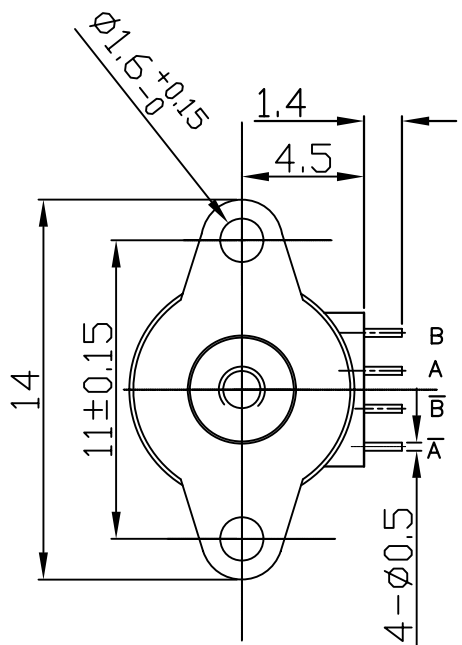
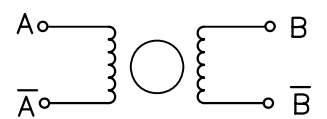


普通公差			
尺寸	A	B	C
L<=3	±0.02	±0.03	±0.05
3<L<=6	±0.05	±0.05	±0.08
6<L<=16	±0.07	±0.08	±0.10
16<L<=30	±0.10	±0.10	±0.12
30<L<=120	±0.10	±0.15	±0.18
120<L<=300	±0.15	±0.20	±0.25
300<L<=500	±0.20	±0.30	±0.40
未标注角度公差	=0.1°		

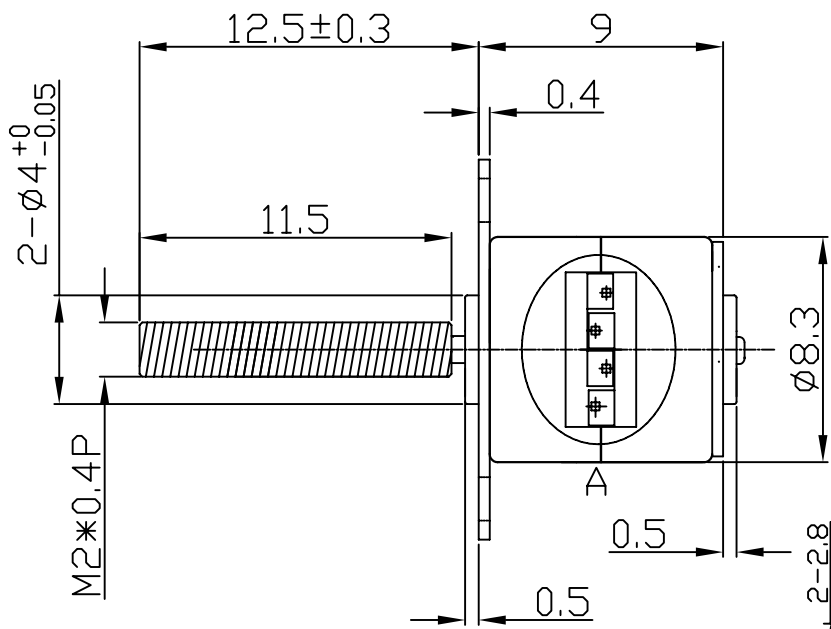


CONNECTION DIAGRAM



ELECTRICAL CHARACTERISTIC

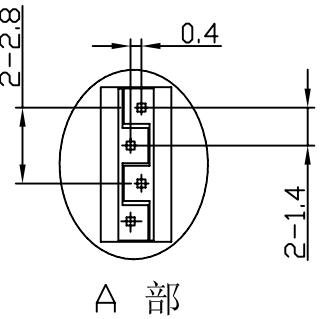
1	RATED VOLTAGE	5 V DC (Driver IC : L6219)
2	CURRENT PER PHASE	500 mA/PHASE
3	COIL RESISTANCE	6±7% ohm/PHASE
4	NO. OF PHASES	2 PHASES
5	STEP ANGLE	18 ° STEP
6	EXCITATION METHOD	2 PHASE EXCITATION
7	DRIVE MODE	BIPOLAR DRIVE
8	PULL-OUT TORQUE	MORE THAN 3.5gf-cm AT 500 pps
9	MAX RESPONSE FREQUENCY	MORE THAN 1600 pps
10	MAX STARTING FREQUENCY	MORE THAN 1000 pps
11	INSULATION CLASS	CLASS E FOR COILS
12	INSULATION STRENGTH	100 V AC FOR ONE SECOND
13	INSULATION RESISTANCE	1MΩ DC 100 Vdc
14	OPERATING TEMPERATURE RANGE	-10 ~ +60 °C



SEQUENCE OF EXCITATION

CONNECTOR PIN LOCATION					
PIN NO	COLOR	CCW ← → CW (SEEN FROM FLANGE SIDE)		PHASE	
1			ON	ON	B
2		ON		ON	A
3		ON	ON		B
4			ON	ON	A

2-2相CW



A 部

A									
版本	版次	更改处数	更改内容				签名	日期	
制图		审核		材质	重量	比例	第三角投影	产品料号	SM0818
设计		批准				5:1		产品名称	步进马达