

+12V

G

S

+

G

+12V

G

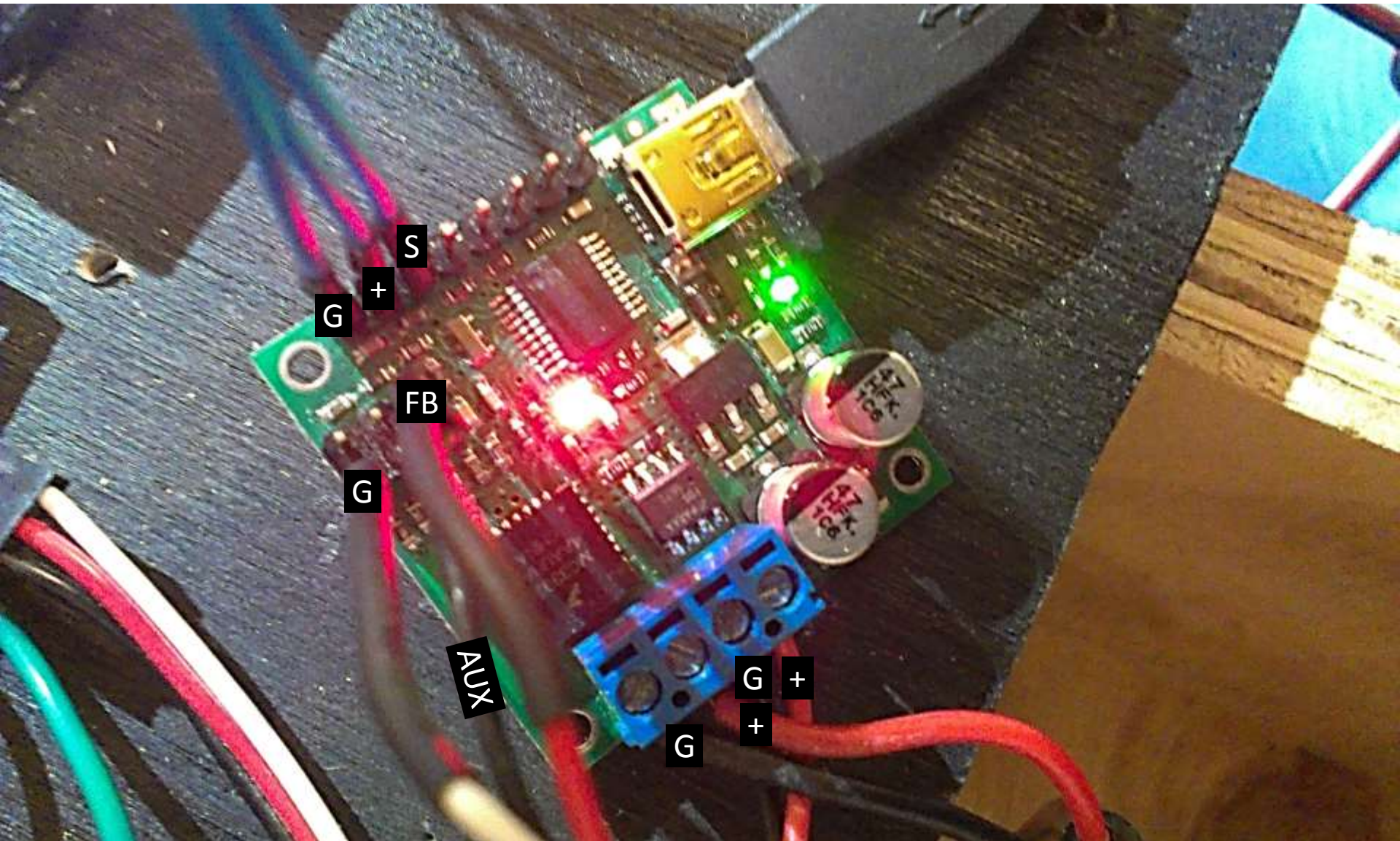
+12V

G & +5V (TO RECEIVER)

G

+12V





G

+

S

FB

G

AUX

G

+

G

+

Pololu Jrk Configuration Utility

File Edit Window Help

Connected to: #00024204

Target: N/A

PID period count: 20261

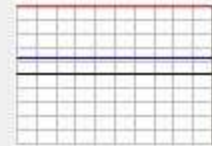
Stop motor

Firmware version: 1.3

Scaled Feedback: 4087

PID period exceeded: No

Errors: 0x0008



Input Feedback PID Motor Errors

Input mode: Pulse width

Analog to digital conversion

Analog samples: 128

Detect disconnect with AUX

Serial interface:

USB Dual Port

USB Chained

UART, detect baud rate

UART, fixed baud rate: 9600

Enable CRC

Device Number: 11

Timeout (s): 0.00

Never sleep (ignore USB suspend)

Scaling (Analog and Pulse Width mode only)

Invert input direction

Learn...

Reset to full range

Input Target

Absolute Max: 4088

Maximum: 4087 4095

Neutral Max: 3064

Neutral Min: 3063

Minimum: 2040 1034

Absolute Min: 2038

Asymmetric

Dead Zone: 1

Degree: 1 - Linear

Manually set target (Serial mode only)

0 4095 4095

Set Target

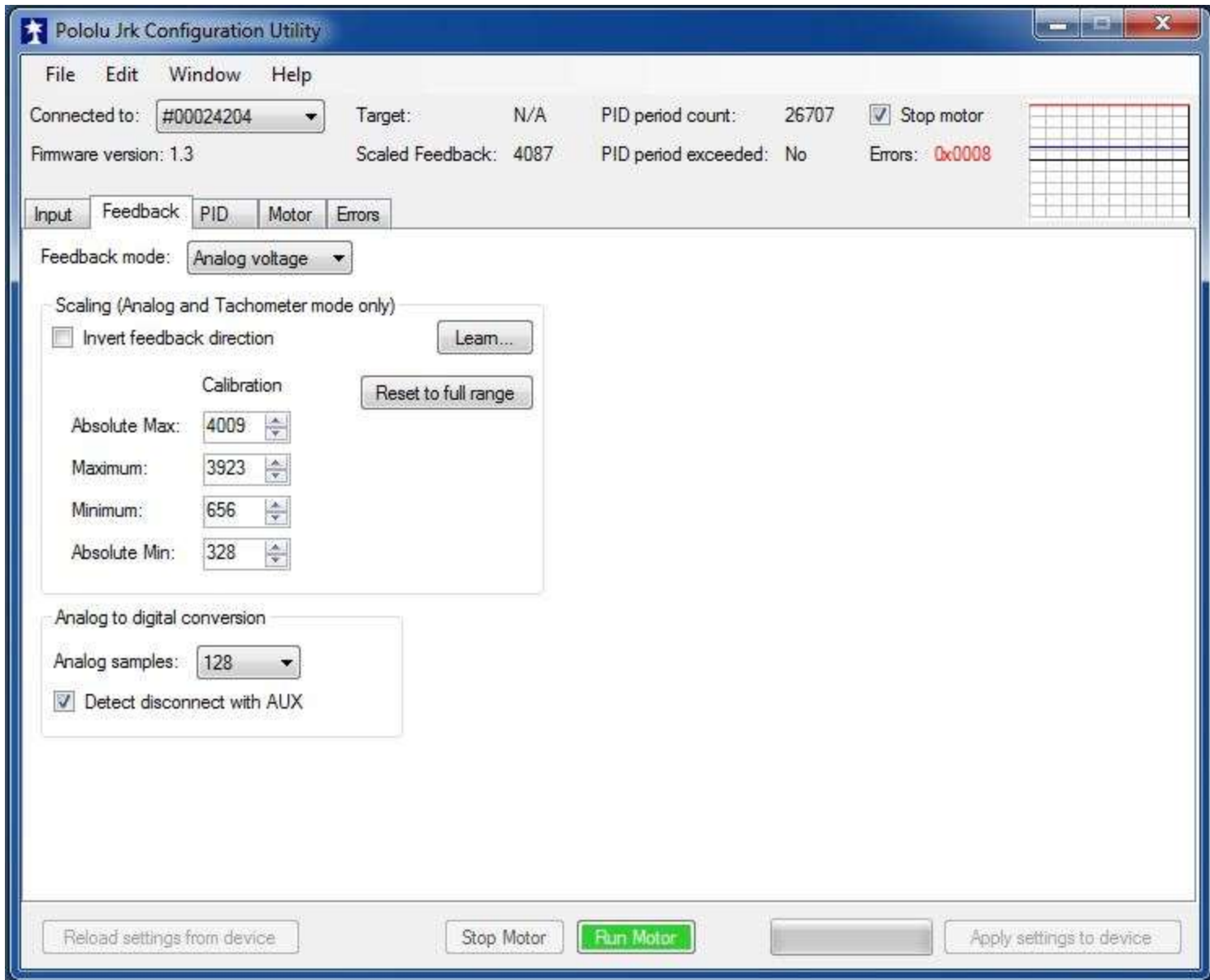
Automatically set target

Reload settings from device

Stop Motor

Run Motor

Apply settings to device





Pololu Jrk Configuration Utility

File Edit Window Help

Connected to: #00024204 Target: N/A PID period count: 29470  Stop motor

Firmware version: 1.3 Scaled Feedback: 4087 PID period exceeded: No Errors: 0x0008

Input Feedback PID Motor Errors

Proportional Coefficient:  $\frac{10}{2^0} = 10.00000$

Integral Coefficient:  $\frac{1}{2^3} = 0.12500$

Derivative Coefficient:  $\frac{60}{2^0} = 60.00000$

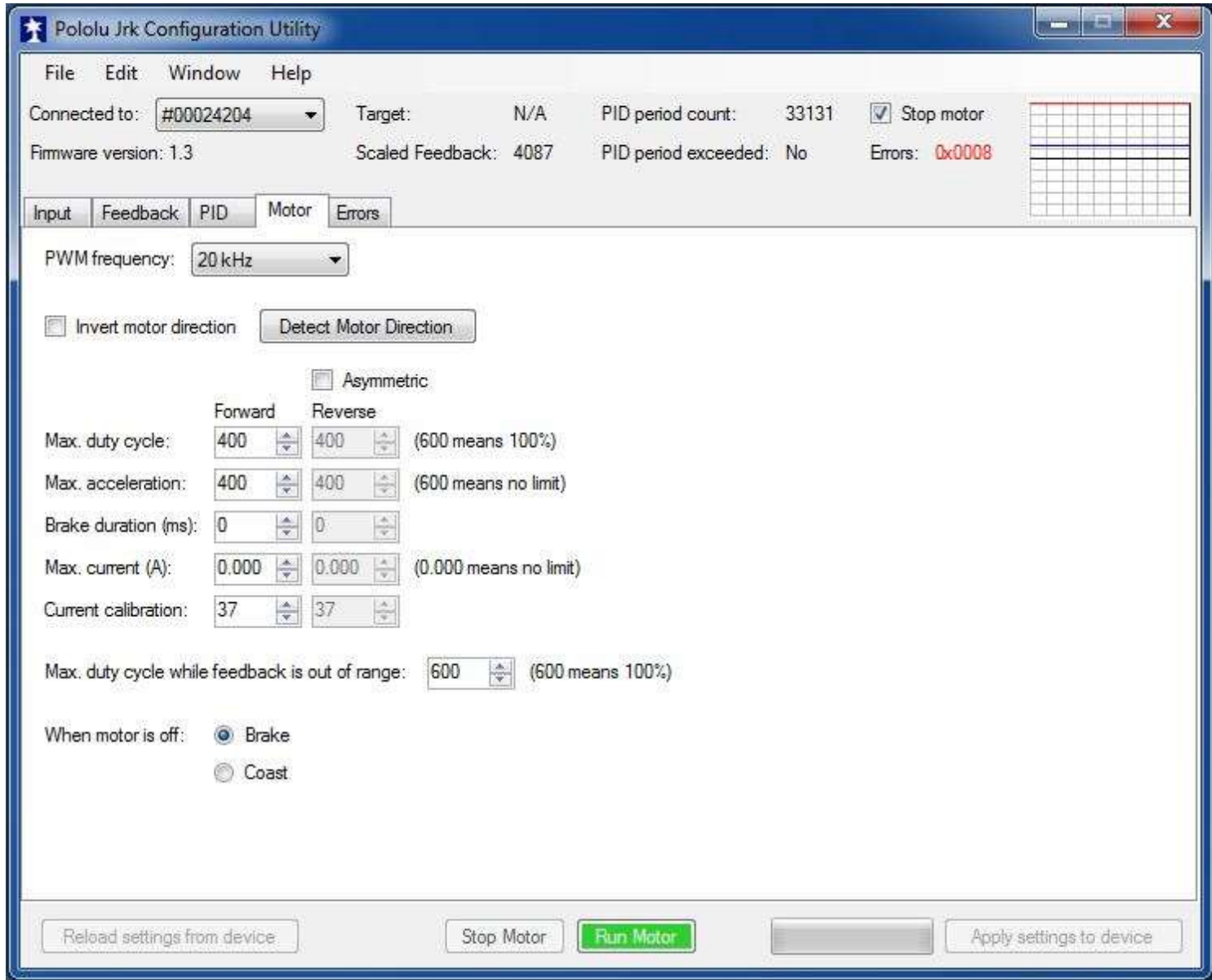
PID period (ms): 10

Integral limit: 1000

Reset integral when proportional term exceeds max duty cycle

Feedback dead zone: 1

Reload settings from device Stop Motor Run Motor Apply settings to device



Pololu Jrk Configuration Utility

File Edit Window Help

Connected to: #00024204 Target: N/A PID period count: 36138  Stop motor

Firmware version: 1.3 Scaled Feedback: 4087 PID period exceeded: No Errors: 0x0008

Input Feedback PID Motor Errors

Bit mask	Error	Setting			Currently stopping motor?	Occurrence count
0x0001	Awaiting command	<input checked="" type="radio"/> Enabled	<input type="radio"/> Enabled and latched		No	0
0x0002	No power	<input checked="" type="radio"/> Enabled	<input type="radio"/> Enabled and latched		No	0
0x0004	Motor driver error	<input checked="" type="radio"/> Enabled	<input type="radio"/> Enabled and latched		No	0
0x0008	Input invalid	<input checked="" type="radio"/> Enabled	<input type="radio"/> Enabled and latched		<b>Yes</b>	19386
0x0010	Input disconnect	<input checked="" type="radio"/> Disabled	<input type="radio"/> Enabled	<input type="radio"/> Enabled and latched	No	19386
0x0020	Feedback disconnect	<input checked="" type="radio"/> Disabled	<input type="radio"/> Enabled	<input type="radio"/> Enabled and latched	No	0
0x0040	Max. current exceeded	<input checked="" type="radio"/> Disabled	<input type="radio"/> Enabled	<input type="radio"/> Enabled and latched	No	0
0x0080	Serial signal error	<input checked="" type="radio"/> Disabled	<input type="radio"/> Enabled	<input type="radio"/> Enabled and latched	No	0
0x0100	Serial overrun	<input checked="" type="radio"/> Disabled	<input type="radio"/> Enabled	<input type="radio"/> Enabled and latched	No	0
0x0200	Serial RX buffer full	<input checked="" type="radio"/> Disabled	<input type="radio"/> Enabled	<input type="radio"/> Enabled and latched	No	0
0x0400	Serial CRC error	<input checked="" type="radio"/> Disabled	<input type="radio"/> Enabled	<input type="radio"/> Enabled and latched	No	0
0x0800	Serial protocol error	<input checked="" type="radio"/> Disabled	<input type="radio"/> Enabled	<input type="radio"/> Enabled and latched	No	0
0x1000	Serial timeout error	<input checked="" type="radio"/> Disabled	<input type="radio"/> Enabled	<input type="radio"/> Enabled and latched	No	0

Clear Errors Reset counts

Reload settings from device Stop Motor Run Motor Apply settings to device